

Using in the Dock&Done mode

Shoot pictures and make print reservations with your digital camera in advance. For details on using the digital camera, refer to the reference manual supplied with the digital camera.

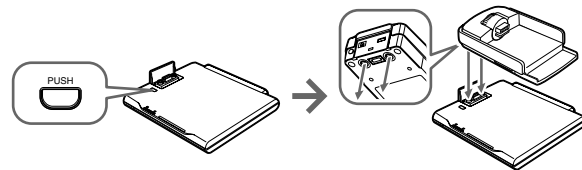
Connect with the printer and the digital camera



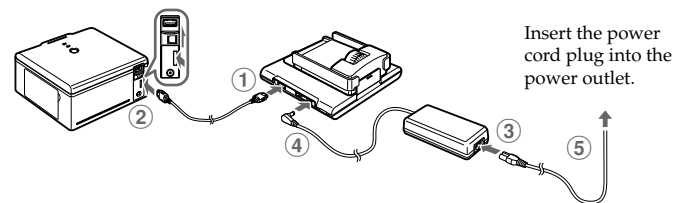
Make sure the power of the storage unit is off before connecting.

Example: When connecting the digital camera IR-500 and the printer P-S100. Display items on the camera monitor and the shape of the camera cradle differ depending on the digital camera.

- 1 Dock the cradle of the digital camera to the storage unit.



- 2 Connect the printer and the storage unit with the Dock&Done cable KP16 (sold separately), connect the AC adapter and power cord to the storage unit, then turn the printer on.

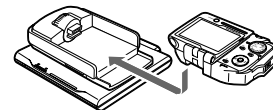


- 3 Set the Dock&Done mode/PC mode switch to "DOCK," then turn the storage unit on.



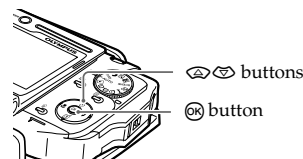
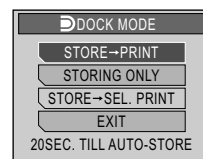
- Notes**
- Before switching from PC mode to Dock&Done mode, perform the PC hardware removal procedure in order to prevent a loss of data.
 - Do not switch to the PC mode while the storage unit is processing in the Dock&Done mode. The operating mode switches when the processing is complete.

- 4 Set the digital camera on the cradle.



- 5 Operate the digital camera to select the desired store option on the digital camera.

- 1 Press the / button to select the desired item.



"STORE → PRINT"

Stores only the newly taken image files of the digital camera, and prints the image files with the print order.

"STORING ONLY"

Stores only the newly taken image files of the digital camera.

"STORE → SEL. PRINT"* Stores only the newly taken image files of the digital camera, and the print setting screen appears.

"EXIT" Closes the "DOCK MODE" menu without storing or printing.

* The same setting as PictBridge mode. For details on the print settings, refer to the reference manual supplied with the digital camera.

- 2 Press the button.
The ACCESS indicator (blue) blinks while storing (the ACCESS indicator on the printer blinks while printing).



- Notes**
- Do not turn off the storage unit, or disconnect its cable while the ACCESS indicator (blue) is blinking, otherwise a store or print error may result. The status of storing/printing or error messages are displayed on the LCD screen of the camera.
 - Do not remove the camera while the ACCESS indicator (blue) is blinking. In this case, use the camera to cancel the process before removing.



- Tips**
- The storage unit starts storing image files automatically if no menu operation is performed within 20 seconds.
 - To cancel storing/printing, press the button on the camera, select "CANCEL," then press in the confirmation screen. When storing/printing is canceled, the camera will turn off and automatically enter charge mode.
 - Print order information is not cleared automatically when a print is executed. Cancel the print order setting manually.
 - If the storage unit is in the Dock&Done mode, the connected digital camera and the printer are not accessible from the connected PC.

Using in the PC mode

Be sure to use the supplied OLYMPUS Master software when storing image files from the connected PC, or browsing, editing, printing, or managing image files on the HD storage. For details, refer to the instruction manual supplied.



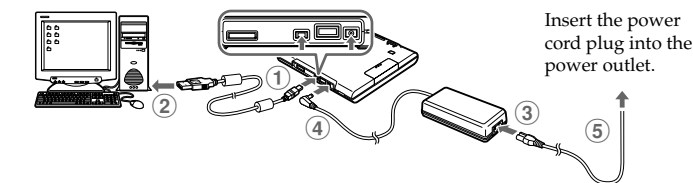
Be sure to use the OLYMPUS Master software supplied with the storage unit. The OLYMPUS Master software supplied with the digital camera may not work properly.

Connecting with a PC



Make sure the power of the storage unit is off before connecting.

- 1 Connect the storage unit to a PC using the USB cable.



- 2 Set the Dock&Done mode/PC mode switch to "PC," then turn the storage unit on.



- Notes**
- Do not change the setting of the Dock&Done/PC mode switch during data transfer. If the mode is changed, data transfer stops and data is not stored correctly.
 - Do not disconnect the USB cable during data transfer, otherwise transfer will stop and may cause data corruption.